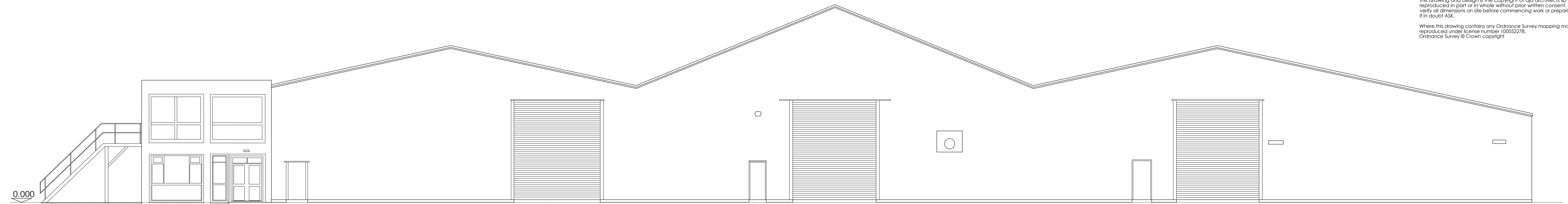


10.000

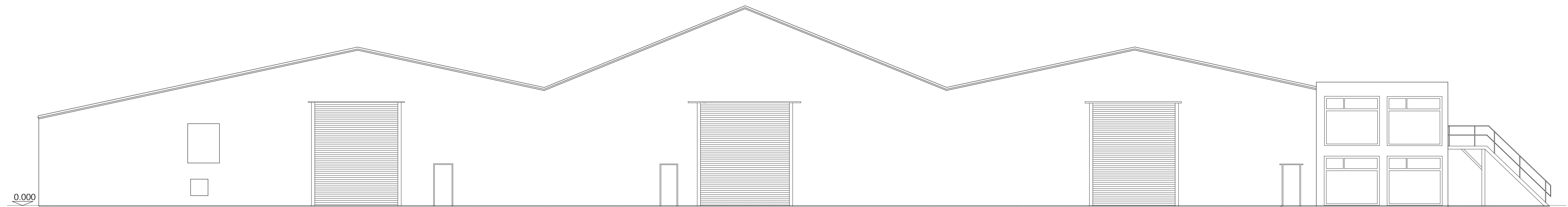
notes

this drawing and design is the copyright of aja architects llp and must not be reproduced in part or in whole without prior written consent. contractors must verify all dimensions on site before commencing work or preparing shop drawings if in doubt ASK.
Where this drawing contains any Ordnance Survey mapping material, it has been reproduced under license number 100052278.
Ordnance Survey © Crown copyright



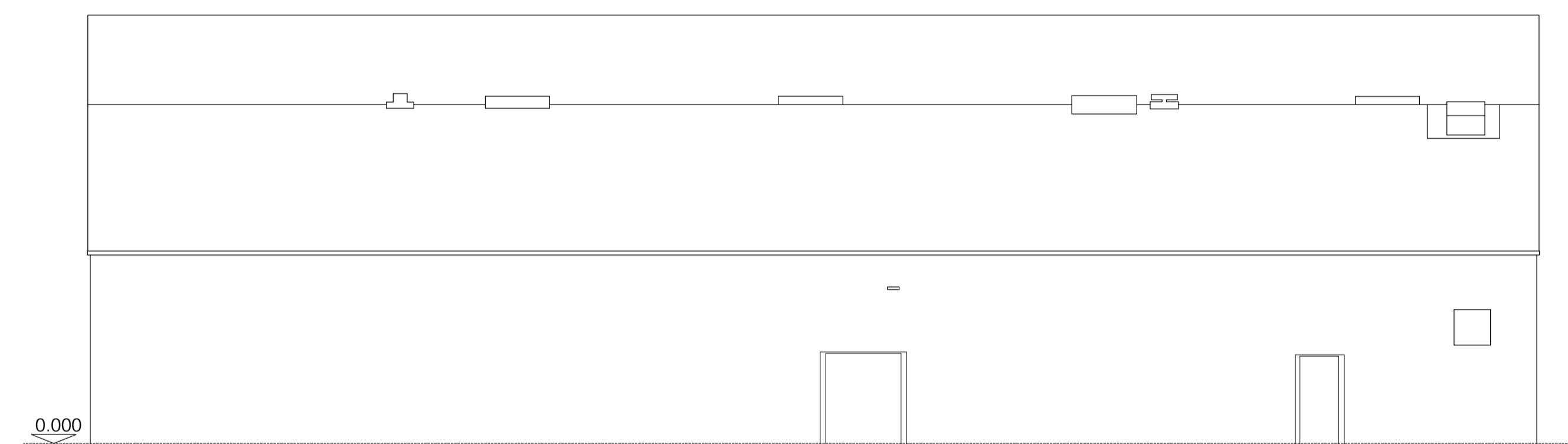
EXISTING FRONT ELEVATION

10.000



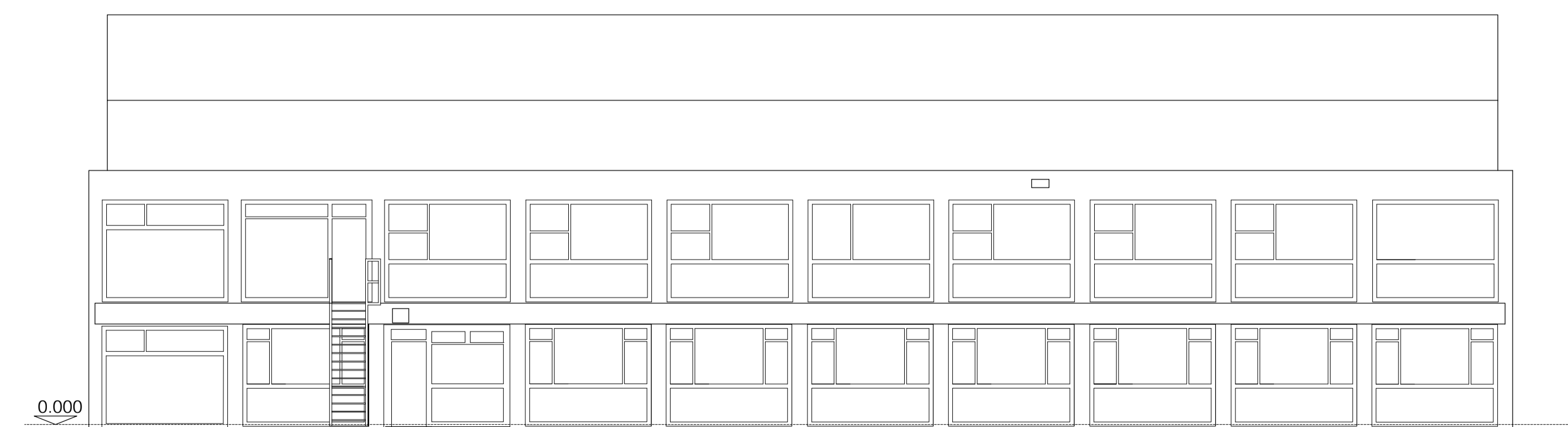
EXISTING REAR ELEVATION

10.000



EXISTING GABLE A ELEVATION

10.000



EXISTING GABLE B ELEVATION

no. date revision by



aja architects llp T: 024 7625 3200
1170 Elliott Court F: 024 7625 3210
Herald Avenue
Coventry Business Park E: aja@aja-architects.com
COVENTRY CV5 6UB W: www.aja-architects.com

AJA Architects is the trading style of AJA Architects Consulting Limited (a limited company no. 1049279) and AJA Architects LLP (a limited liability partnership registered in England no. OC336721).

client



project

Unit 3
Deeside Industrial Park
Zone 3, Weighbridge Road
Flintshire, CH5 2LL

drawing

EXISTING
ELEVATIONS

scale 1:100 @ A1 drawn NE

checked SPP date JAN 2024

no

7205-014

PLANNING - PRELIMINARY

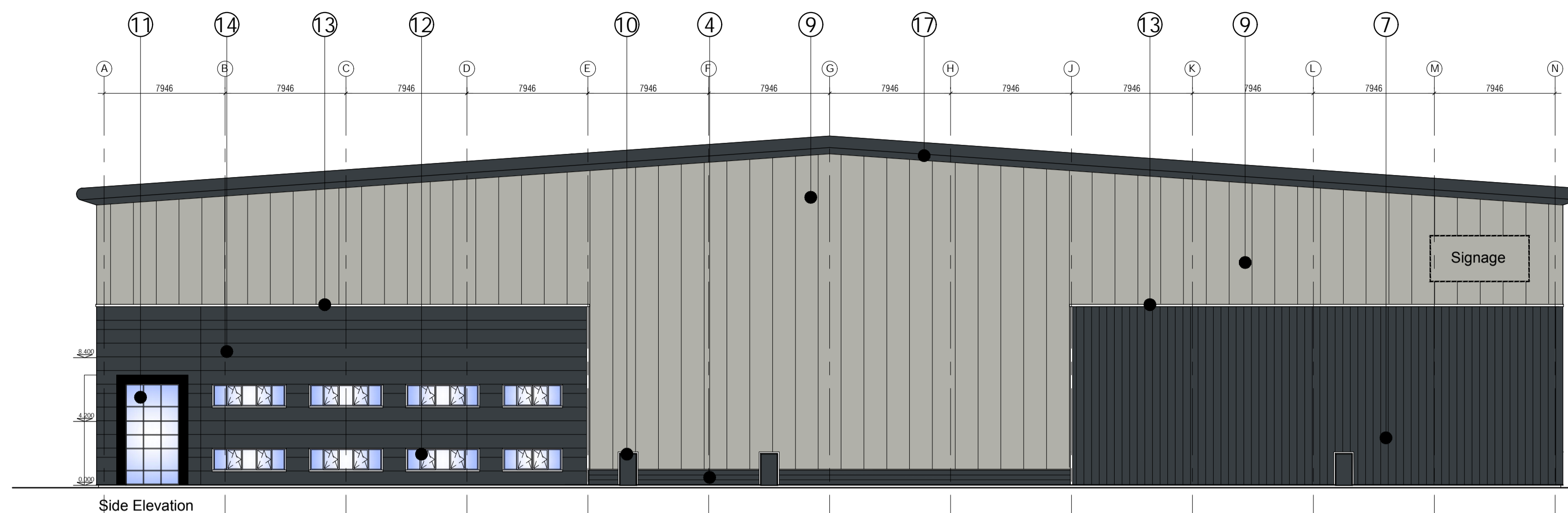
notes

this drawing and design is the copyright of aja architects llp and must not be reproduced in part or in whole without prior written consent. contractors must verify all dimensions on site before commencing work or preparing shop drawings if in doubt ASK.

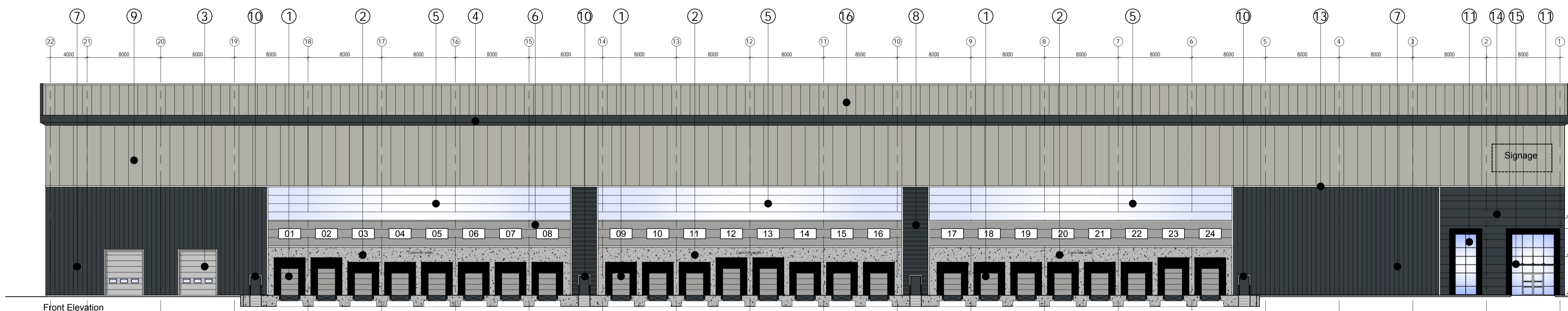
Where this drawing contains any Ordnance Survey mapping material, it has been reproduced under license number 100052278. Ordnance Survey © Crown copyright

Key

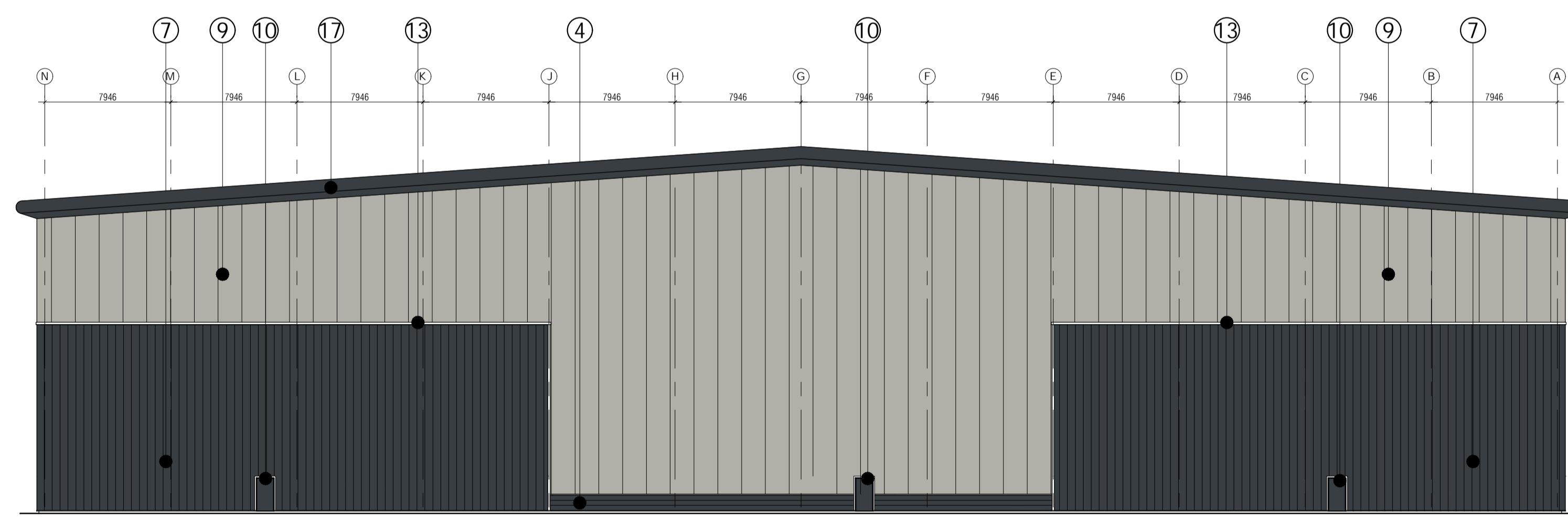
- ① Dock Access Doors
Colour: Metallic Silver RAL 9006
- ② Concrete Walls
- ③ Level Access Doors
Colour: Metallic Silver RAL 9006
- ④ Performed Panels
Colour: Anthracite Grey (RAL 7016)
- ⑤ Flat Translucent Wall Panels
- ⑥ Horizontal Cladding (Flat Panel)
Colour: Metallic Silver RAL 9006
- ⑦ Vertical Cladding (Trapezoidal)
Colour: Anthracite Grey (RAL 7016)
- ⑧ Horizontal Cladding (Trapezoidal)
Colour: Anthracite Grey (RAL 7016)
- ⑨ Vertical Cladding (Trapezoidal)
Colour: Goosewing Grey RAL 080 70 05
- ⑩ Fire Exit Doors
Colour: Anthracite Grey (RAL 7016)
- ⑪ Aluminium framed double glazed curtain walling with Frame Surround
- ⑫ Aluminium framed double glazed windows to office area
- ⑬ Pressed metal feature band
- ⑭ Horizontal Cladding (Flat Panel)
Colour: Anthracite Grey (RAL 7016)
- ⑮ Canopy
- ⑯ Roof Cladding
Colour: Goosewing Grey RAL 080 70 05
- ⑰ Projecting Eaves with PPC Profiled Steel Fascia
Colour: Anthracite Grey (RAL 7016)



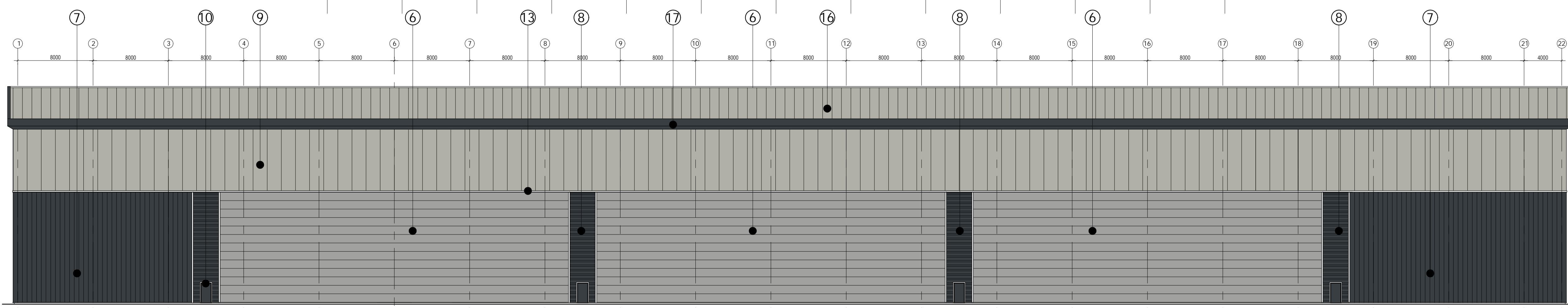
Side Elevation



Front Elevation



Side Elevation



Rear Elevation

no. date revision by



aja architects llp T: 024 7625 3200
 1170 Elliott Court F: 024 7625 3210
 Herald Avenue
 Coventry Business Park E: aja@aja-architects.com
 COVENTRY CV5 6UB W: www.aja-architects.com

AJA Architects is the trading style of AJA Architects Consulting Limited (a limited company no. 1049279) and AJA Architects LLP (a limited liability partnership registered in England no. OC335721).
 client



project

Unit 3
 Deeside Industrial Park
 Zone 3, Weighbridge Road
 Flintshire, CH5 2LL

drawing

PROPOSED ELEVATIONS

scale 1:250 @ A1 drawn NE

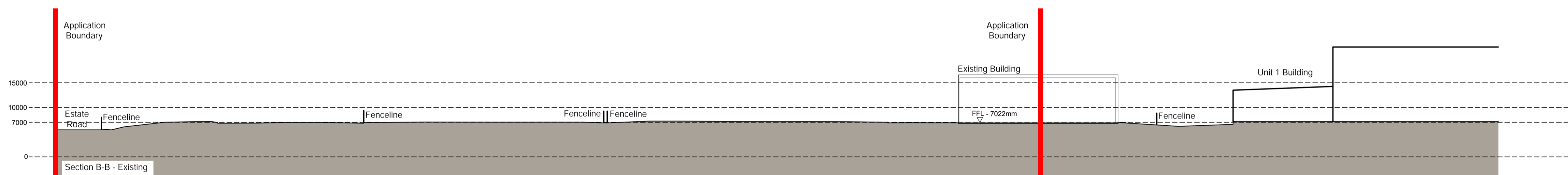
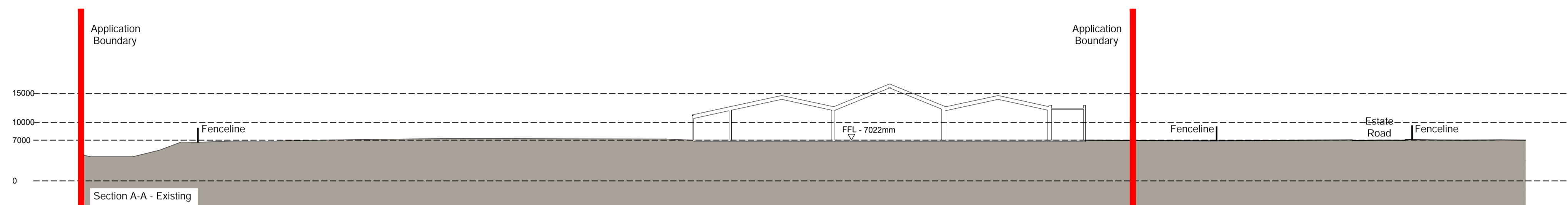
checked SPP date JAN 2024

no
 7205-015
 PLANNING - PRELIMINARY

notes

this drawing and design is the copyright of aja architects llp and must not be reproduced in part or in whole without prior written consent. contractors must verify all dimensions on site before commencing work or preparing shop drawings if in doubt ASK.

Where this drawing contains any Ordnance Survey mapping material, it has been reproduced under license number 100052278. Ordnance Survey © Crown copyright



no.	date	revision	by
-----	------	----------	----



aja architects llp
 1170 Elliott Court
 Herald Avenue
 Coventry Business Park
 COVENTRY CV5 6UB

T: 024 7625 3200
 F: 024 7625 3210
 E: aja@aja-architects.com
 W: www.aja-architects.com

AJA Architects is the trading style of AJA Architects Consulting Limited (a limited company no. 1049279) and AJA Architects LLP (a limited liability partnership registered in England no. OC336721).

client



project

Unit 3
 Deeside Industrial Park
 Zone 3, Weighbridge Road
 Flintshire, CH5 2LL

drawing

EXISTING SITE
 SECTIONS

scale 1:500 @ A1 drawn NE

checked SPP date JAN 2024

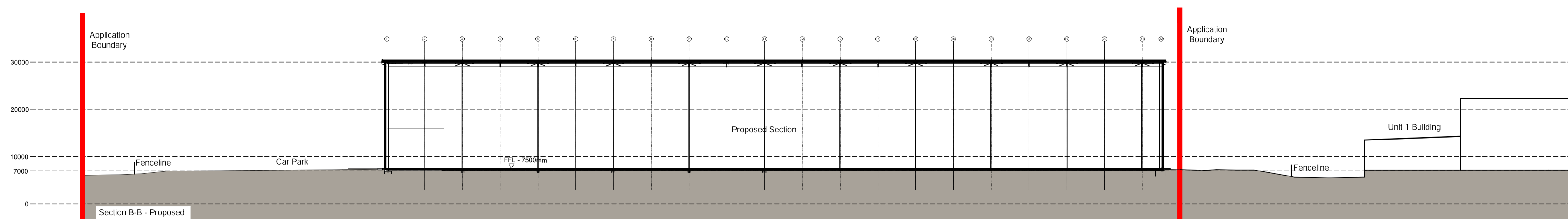
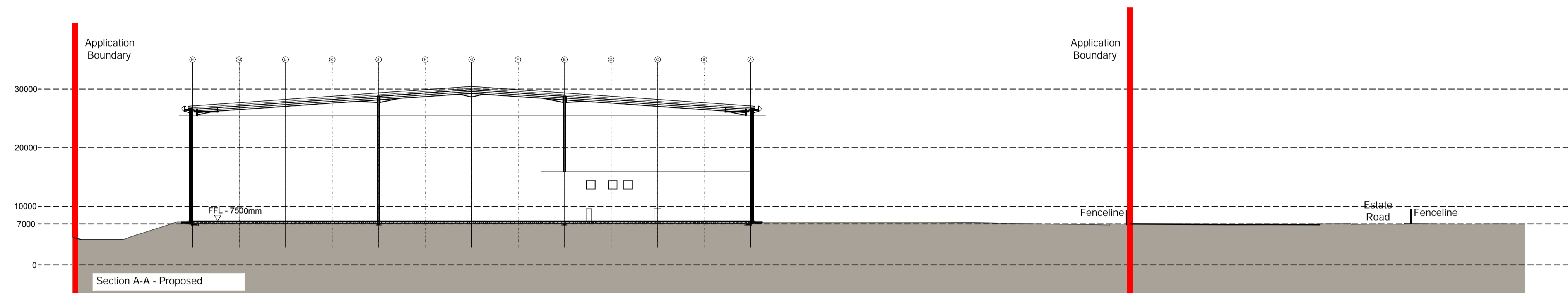
no

7205-016
 PLANNING - PRELIMINARY

notes

this drawing and design is the copyright of aja architects llp and must not be reproduced in part or in whole without prior written consent. contractors must verify all dimensions on site before commencing work or preparing shop drawings if in doubt ASK.

Where this drawing contains any Ordnance Survey mapping material, it has been reproduced under license number 100052278. Ordnance Survey © Crown copyright



no.	date	revision	by
-----	------	----------	----



aja architects llp
 1170 Elliott Court
 Herald Avenue
 Coventry Business Park
 COVENTRY CV5 6UB

T: 024 7625 3200
 F: 024 7625 3210
 E: aja@aja-architects.com
 W: www.aja-architects.com

AJA Architects is the trading style of AJA Architects Consulting Limited (a limited company no. 1049279) and AJA Architects LLP (a limited liability partnership registered in England no. OC336721).



project

Unit 3
 Deeside Industrial Park
 Zone 3, Weighbridge Road
 Flintshire, CH5 2LL

drawing

PROPOSED SITE
SECTIONS

scale 1:500 @ A1 drawn NE

checked SPP date JAN 2024

no

7205-017
PLANNING - PRELIMINARY