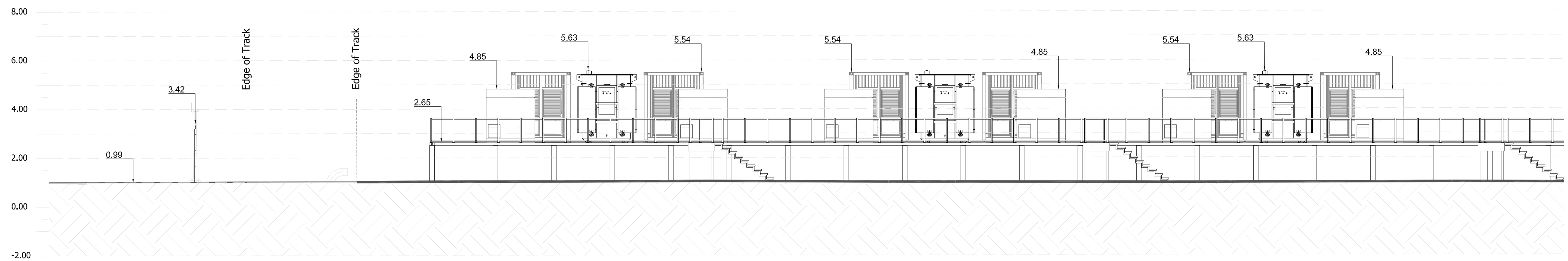


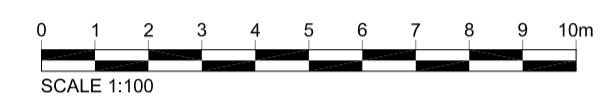
This drawing is the copyright of ONE PLANET Limited and must not be reproduced in whole or in part or used in any manner without their written permission.  
Scaled dimensions must not be taken from this drawing. All dimensions are to be confirmed on site prior to commencement of work.

Revisions:

Revision	Date	Revision Notes	Drawn	Inspected
01	13.05.24	First Issue	EM	JW
02	24.05.24	Elevations Updated	CS	JW
03	06.06.24	Layout Updated & Site Name Changed	CS	JW



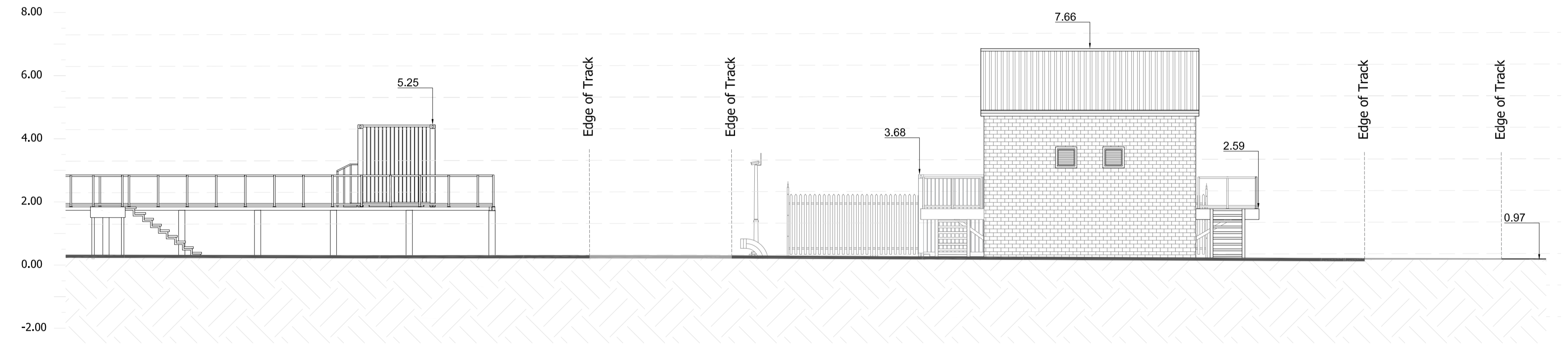
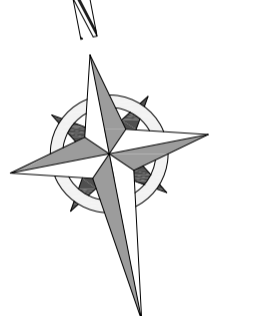
1 SECTION A - A  
Scale: 1:100@A1



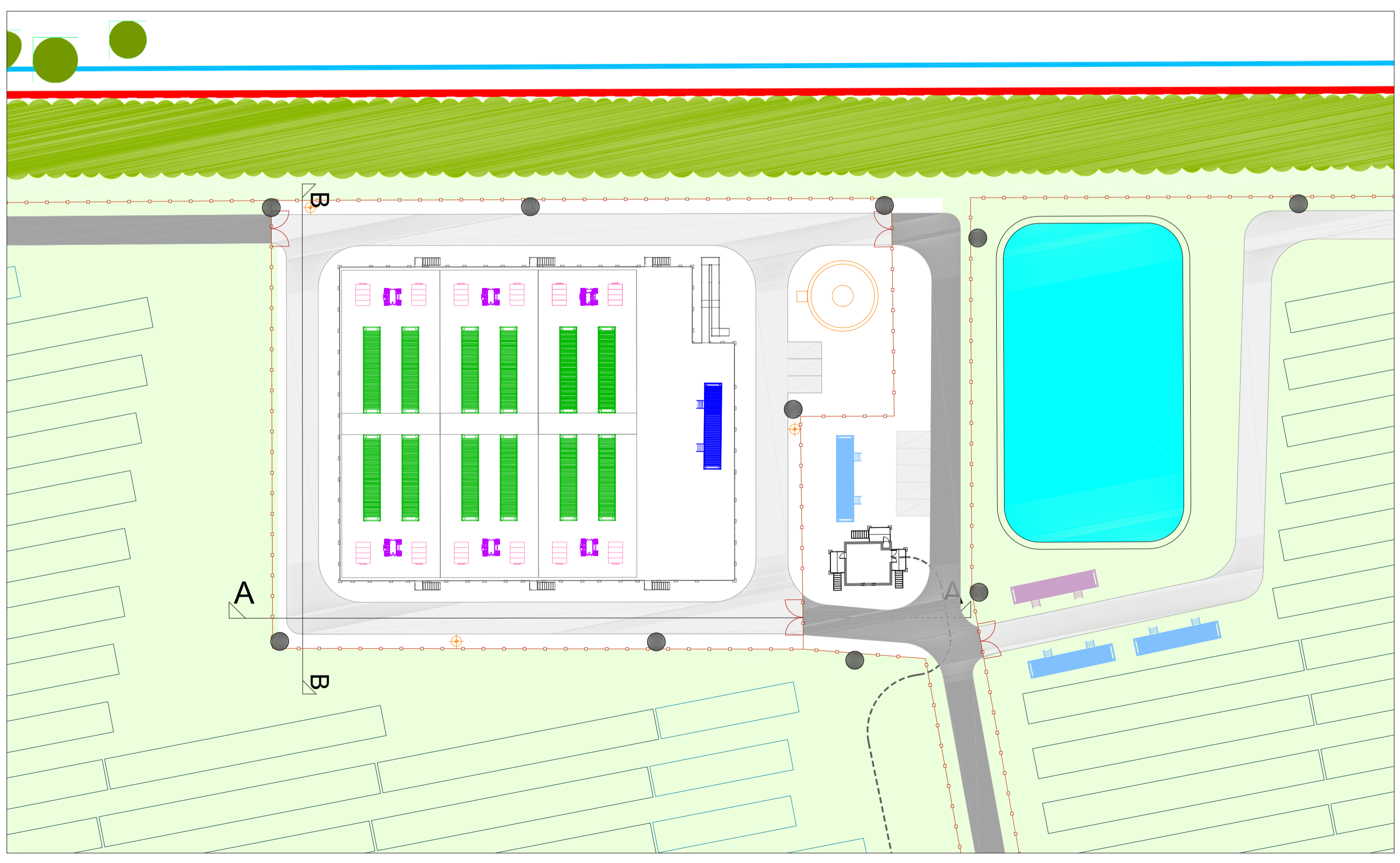
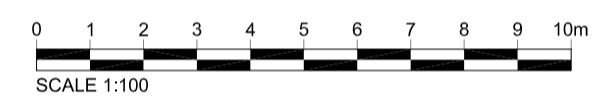
- LEGEND:
- PLANNING APPLICATION BOUNDARY
  - CABLE ROUTE
  - DNO ACCESS
  - ACCESS TRACK
  - WATER COURSE
  - PERIMETER FENCELINE

- SITE INFRASTRUCTURE:
- L SECURITY GATE
  - CCTV CAMERA
  - SOLAR ARRAY
  - 33kV SUBSTATION
  - WATER TANK
  - CUSTOMER SWITCHGEAR
  - SPARE PARTS CONTAINER
  - WELFARE CABIN
  - BESS CONTAINER
  - POWER CONVERSION SYSTEM
  - TRANSFORMER
  - + HYDRANT

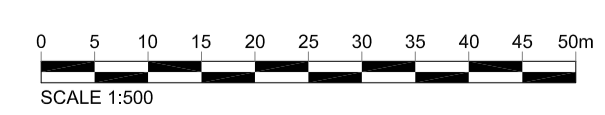
- ENVIRONMENT:
- ▨ TUSSOCKY GRASSLAND
  - ▨ MEADOW GRASSLAND
  - ▨ EXISTING VEGETATION
  - ATTENUATION POND



2 SECTION A - A (Cont.)  
Scale: 1:100@A1



3 KEY PLAN  
Scale: 1:500@A1



Project: **Proposed Solar & Battery Storage System Land to the North of Marsh Road, Burnham-on Crouch**

Consultant:



©2020-2022 by One Planet Developments Limited  
Bisclegate Farm, Wimborne, Dorset BH21 3RS  
Tel: +44 (0) 12061202

Drawn by:



CADmando Design & Draughting Solutions Ltd  
The Long Barn, The Courtyard, Severn Drive, Tewkesbury  
Business Park, GL20 8GD  
Tel: +44 (0) 1684 850019  
Mob: +44 (0) 7814436910

Status:

**PLANNING**

Drawing Title:  
**BESS and Substation Contextual Elevation Plan**

Drawn: EM      Checked: JW      First Issued: 13.05.2024

Project Code: OPL012- EL-01      Drawing Number:

Sheet Size: A1      Scale: A:N      Revision: 03