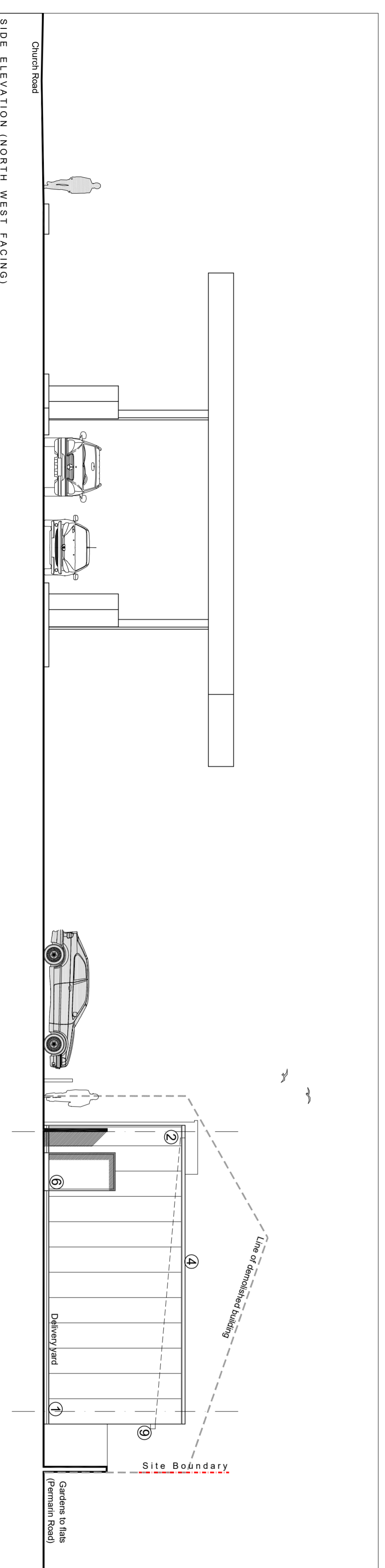
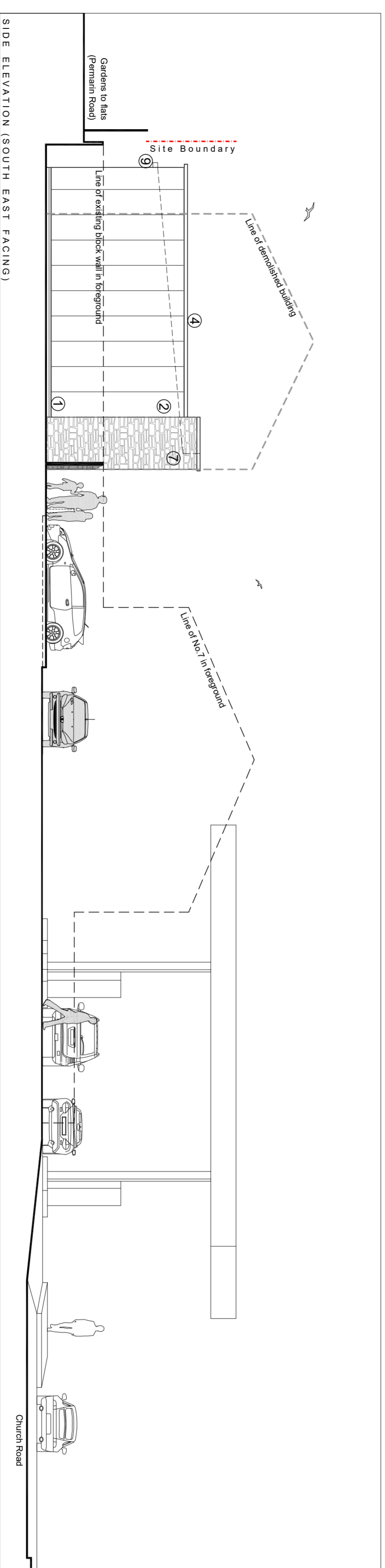


MATERIALS KEY:

- 1 Facing brickwork (to LPA approval)
- 2 Rockwood core composite panels (colour TBC)
- 3 Fibre cement weatherboarding (black)
- 4 Colour coated aluminum capping (dark grey)
- 5 Aluminium shopfronts with clear glass with 50mm sight line
- 6 Steel colour coated security door
- 7 Reconstituted rough coursed stone (Bradstone or similar)
- 8 Composite roof panels
- 9 Colour coated aluminum rainwaterer goods (dark grey)



C. W. ARCHITECTS Ltd

Governor House, 8 Park Grove, Cardiff CF10 3BN
 Tel: +44 (0)2920 23123 Fax: +44 (0)2920 38837 E-Mail: info@cwarchitects.co.uk

Project Name: PFS, Church Road, Penryn, Falmouth
 Project Ref: SP008

Drawing Title: Proposed Elevations_1
 Drawing Number: SP008 - PQ5
 Scale: 1:100 @ A2

Revision: PLANNING Drawn by: fb Date: July 2020